

The town

"Jaywick is one of them places where you either make it, or break it. And a lot of people been breaking it round here."

On the east coast of England in the county of Essex, there is a small seaside town named Jaywick Sands, whose once idyllic holiday chalets are in a state of dilapidation and decay. In 2010, the poverty-stricken town was identified as the most deprived place in the UK using the British Government's Indices of Multiple Deprivation survey, and more recently in 2015, the town learned that it has once again come at the bottom of the official rankings for deprivation. Around 60% of residents are on benefits, with around 40% unable to work due to long term illness or disability.

Because of Jaywick's unique history and astonishing levels of poverty, the town has been subject to negative portrayals in the media, including 2015's *Benefits By the Sea* on Channel 5, which categorised Jaywick as a desperate place of unemployment, anti-social behaviour, and hopelessness. These portrayals neglect the important, but less quantifiable, presence of a working-class community spirit like no other-- despite, or perhaps because of, the poverty, many residents in Jaywick feel an enormous sense of pride over where they live, and wouldn't want to live anywhere else. Jaywick is in many ways a place forgotten by time-- but not just because of the run-down housing and faded charm. It's a place where people support neighbours in a way we don't often see in the modern age.

The play

"Shine on, every day and every night. And this is how we get through Jaywick."

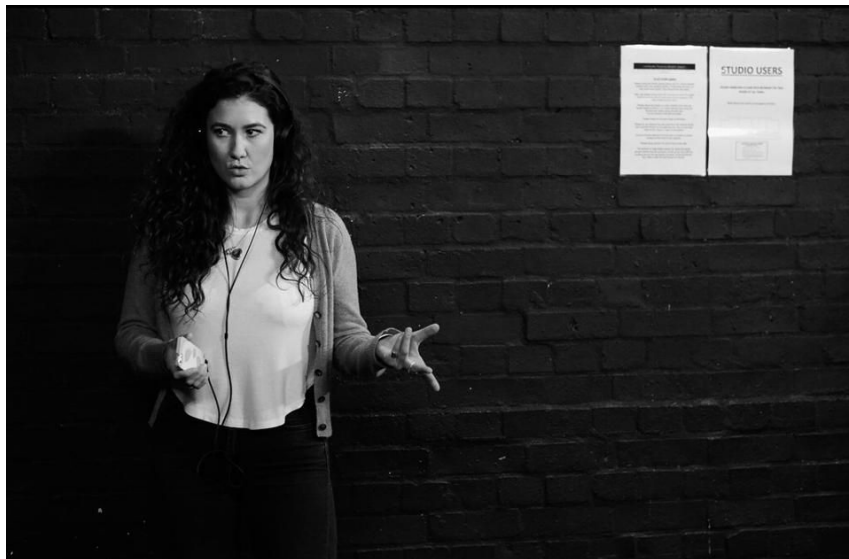
Writer Dan Murphy remembers Jaywick as the seaside resort he used to visit with his gran in the summer holidays. He became interested in the dissonance between his memory and the reality for those living there today, but also in the enduring community spirit and local pride that defies the extreme adversity of the town.

After a year of research, Dan now has a substantial body of audio recordings which he is shaping into a play at once more moving and more humorous than you might expect. In November 2015, the company completed an R&D on this material with a group of actors at Lakeside Theatre, Colchester, and Hightide Theatre, London. The finished piece will be presented using the recorded delivery technique, to bring the subtleties of the original utterances to the stage. It won't just be interviews, but active scenes of community forums, line dancing evenings, and talent shows.

Carry on Jaywick will follow the lives of a number of Jaywick's residents, as they prepare for "Jaywick's Got Talent", try to generate positive change in their community, and reflect on the place they call home.

Carry on Jaywick is about home, identity, and not letting life grind you down.

To watch our soundslide trailer for the show, visit [here](#) (Password: Jaywick1)



Actor Georgia Brown in rehearsal

The team

Murphy and Co. is a new touring company whose work explores big issues in small settings. It is writer Dan Murphy, director Hannah Joss and producer Ashleigh Wheeler.

Dan grew up in Essex and his work seeks to bring the life and voices of his home county to the stage. He was shortlisted for the Royal & Derngate/Hightide Award 2014 (for the Jaywick project), BBC Trans Comedy Award 2013 and Old Vic New Voices 24 Hour Plays 2013. He is currently supporting Alecky Blythe on her National Theatre production.

Hannah's credits as director include *Eigengrau* (Brighton Fringe, Old Red Lion), *The 11th Hour* (The Egg), and *That Moment* (Crescent Arts, Belfast). Credits as Associate Director include: *The Adventure* (Lyric Hammersmith/national tour). Credits as Assistant Director include: *Incognito* (Live Theatre/HighTide/Bush), Soho Young Playwrights (Soho Theatre).

Ashleigh is the new producer at the Yard theatre. Recent productions includes *Treasure* (Finborough Theatre) and *fiji land* (Southwark Playhouse/Oxford Playhouse). She has also worked with Camden People's Theatre, and Up in Arms.

Feedback

"A very exciting piece of work and gives a much needed opportunity to voices that need to be heard" - Francesca Clark, Executive Producer at Hightide Festival Theatre

"I've been fascinated with the world and the characters that Dan has presented in his first draft and rough cut. He has been building very good relationships with key members of this inimitable community and that is now starting to pay him dividends in terms of narrative" - Alecky Blythe (London Road)

"I hugely enjoyed Dan Murphy's Jaywick. It's a smart, sharp piece with an outstanding cast that provides a compelling insight into British working class culture, giving voice to those who are all too rarely present on our stages. It's also a brilliant dissection of the fetishisation of working class culture by the British media. It's very funny too" - Amber Massie-Blomfield, Executive Director at Camden People's Theatre

Future plans

The piece will be presented as a staged reading at Pulse Festival and HighTide Festival 2016. In autumn 2016, we intend to tour the piece to studios and non-traditional theatre spaces in Essex, followed by a London run in early 2017 and further touring thereafter.

For more information, contact producer Ashleigh Wheeler on ashleigh.r.wheeler@gmail.com